

Vanessa Debiais-Sainton
Head of Sector
Erasmus+ for Higher Education

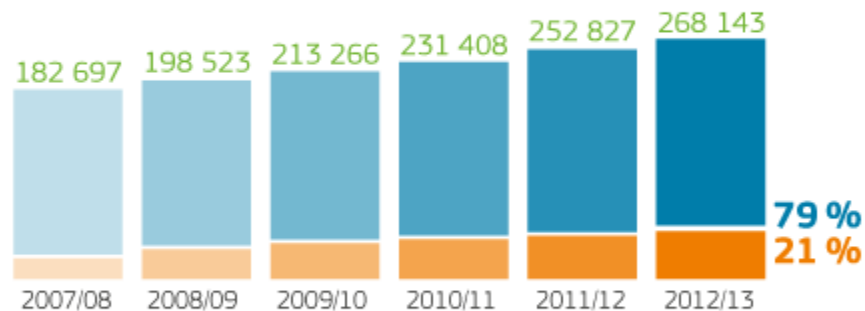


The **erasmus** Impact Study



Erasmus: Changing lives, opening minds

2012-2013



Job placements

Studies

Total student mobility

3
MILLION

1987/88 - 2012/13

Erasmus students by country 2012-2013

COUNTRY	STUDENTS
SPAIN	39 249
FRANCE	35 311
GERMANY	34 891
ITALY	25 805
POLAND	16 221
UNITED KINGDOM	14 572
TURKEY	14 412
NETHERLANDS	10 061
BELGIUM	7 741
CZECH REPUBLIC	7 299
PORTUGAL	7 041
AUSTRIA	5 714
FINLAND	5 496
ROMANIA	5 011
HUNGARY	4 387
GREECE	4 249
SWEDEN	3 728
DENMARK	3 646
LITHUANIA	3 529
SLOVAKIA	3 008
SWITZERLAND	2 860
IRELAND	2 762
LATVIA	2 149
BULGARIA	1 952
SLOVENIA	1 821
NORWAY	1 707
ESTONIA	1 153
CROATIA	1 124
LUXEMBOURG	405
CYPRUS	350
ICELAND	255
MALTA	208
LIECHTENSTEIN	26

TOTAL OUTBOUND
268 143
STUDENTS





1

Impact on skills
development?

Impact on
employability and
labour mobility?

2

3

Impact on the
internationalisation
of HEIs?





European
Commission

CHE
Consult

Coordinator

Research

CHE
Centrum für
Hochschulentwicklung



Universities

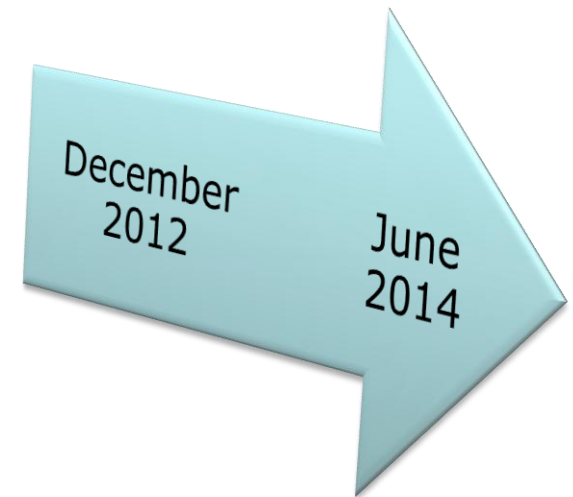
Students

iesn
INTERNATIONAL EXCHANGE
ERASMUS STUDENT NETWORK



Brussels Education Services

Administration



Budget
€ 483.400

5 on-line surveys... ...80.000 respondents

**Quantitative
study**

34 countries

56,733 students (mobile , non-mobile)
15,556 alumni (mobile , non-mobile)
4,986 staff members (mobile , non-mobile)
964 HEIs
652 employers

**Qualitative
study**

8 countries

BG, CZ, FI, DE, LT, PT, ES and UK
Interviews, workshops, site visits

EMPLOYMENT AND CAREER DEVELOPMENT

ERASMUS STUDENTS



of students study or train abroad **to enhance their employability** abroad

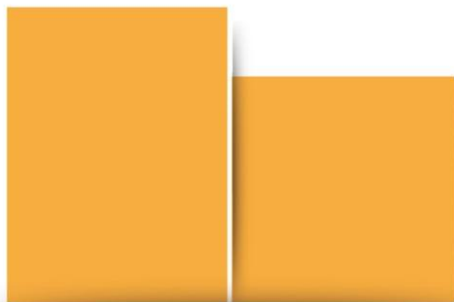


UNEMPLOYMENT RATE

Young people who study or train abroad are half as likely to face long-term unemployment

5 years after graduation
the unemployment rate
of Erasmus students is

23% LOWER



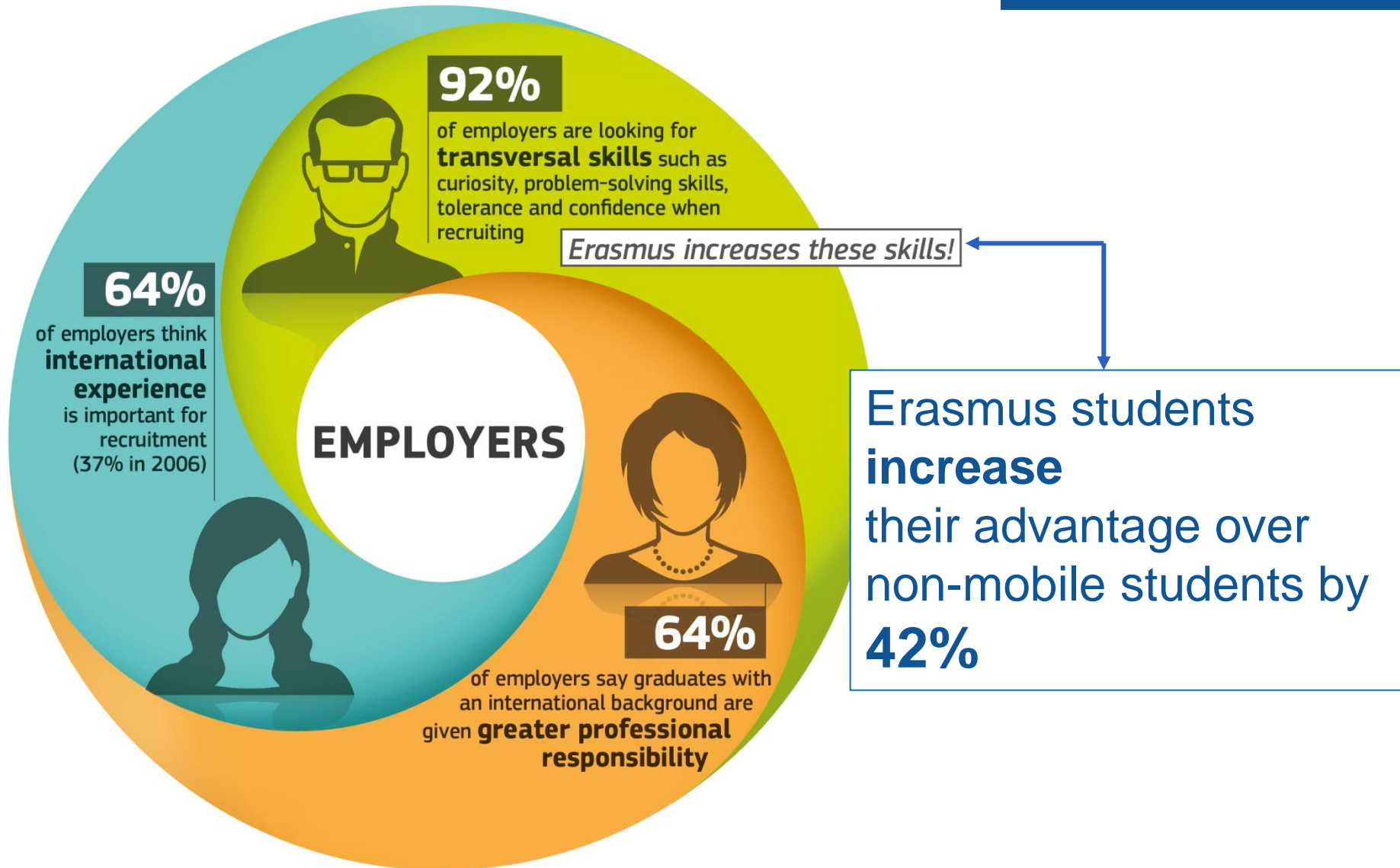
memo©

Test before and after mobility



memo©

EMPLOYMENT AND CAREER DEVELOPMENT



WORK PLACEMENT



Almost 1 in 10 Erasmus trainees who did work placements have started **their own company** and **3 out of 4** plan to or can envisage to do so



More than 1 in 3 Erasmus students were offered a **position** at their host company

INTERNATIONAL LIFE

Former Erasmus students

Non-mobile students

40%

moved to another country
after graduation



23%



93%



can easily imagine **living abroad**
in the future

73%



33%



have a life partner with
a different nationality

13%



27%



met their **life partner** during
their stay abroad

- ❑ More than 2 million Higher Education students
- ❑ 450,000 traineeships
- ❑ More accessible
- ❑ Stronger support to linguistic and inter-cultural preparation
- ❑ Additional financial support targetted to those who need it most
- ❑ Full recognition
- ❑ Higher quality
- ❑ Higher impact



You want to know more?



The **erasmus** Impact Study

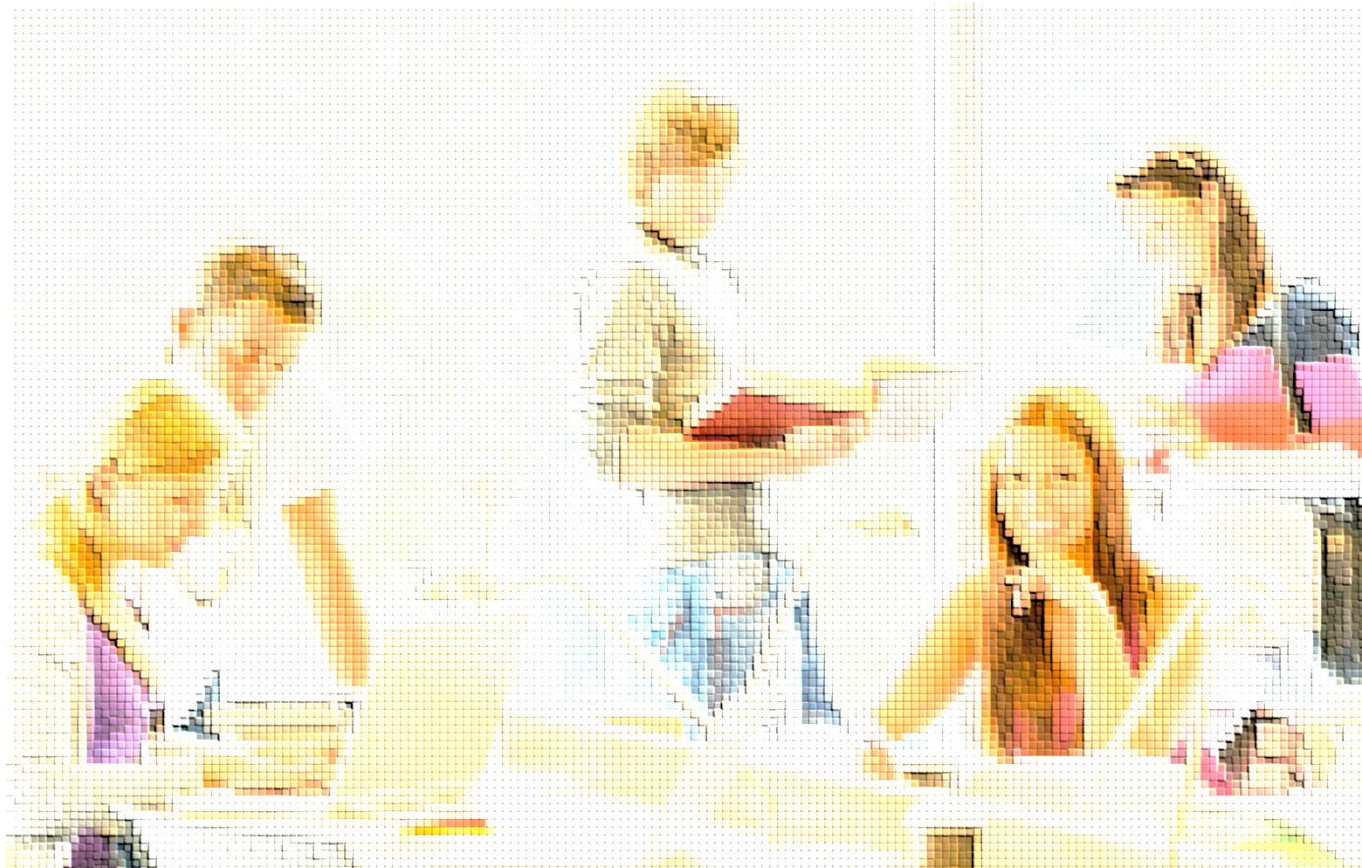


IP/14/1025

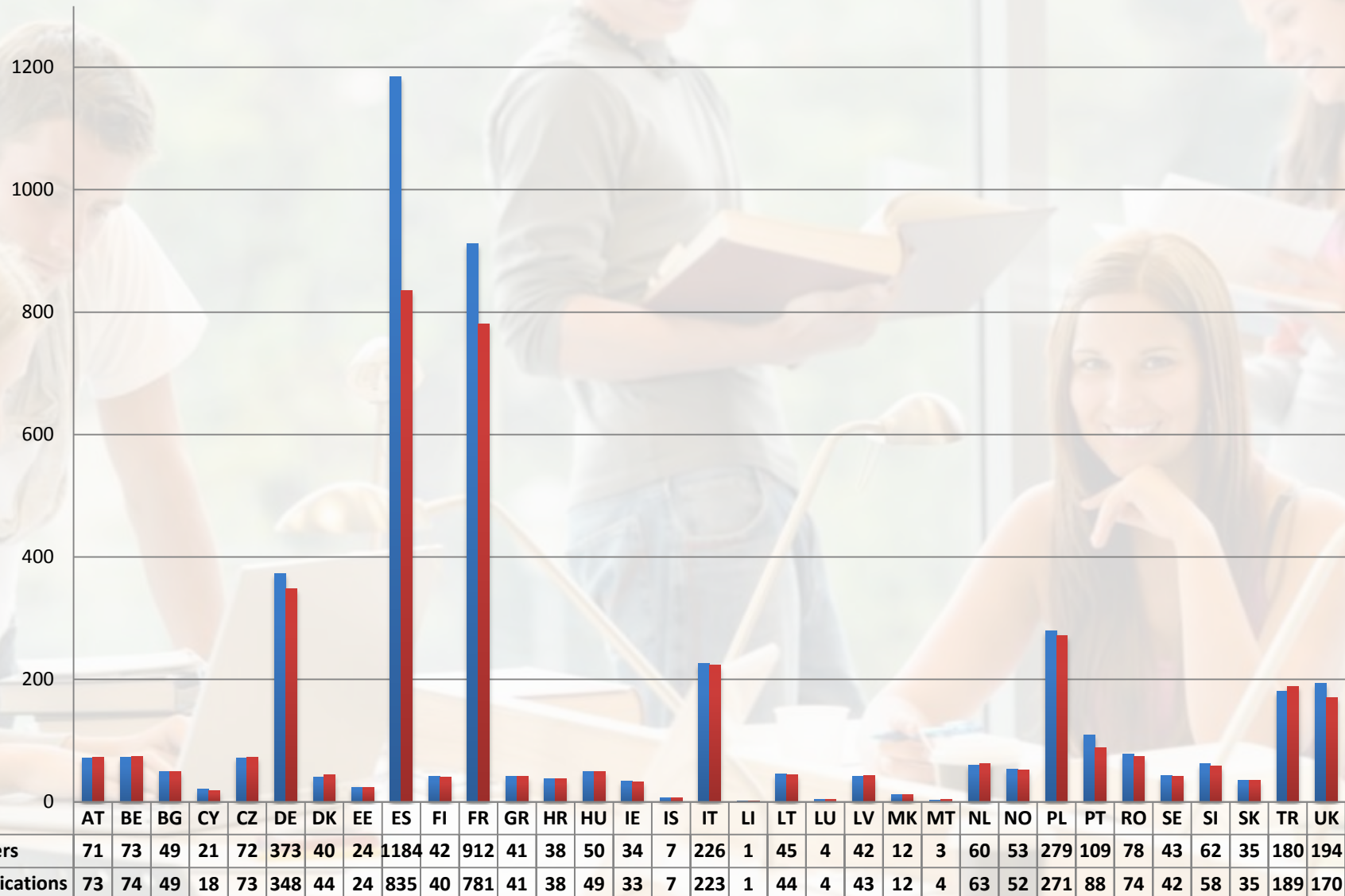
MEMO/14/534

http://ec.europa.eu/education/library/study/2014/erasmus-impact_en.pdf

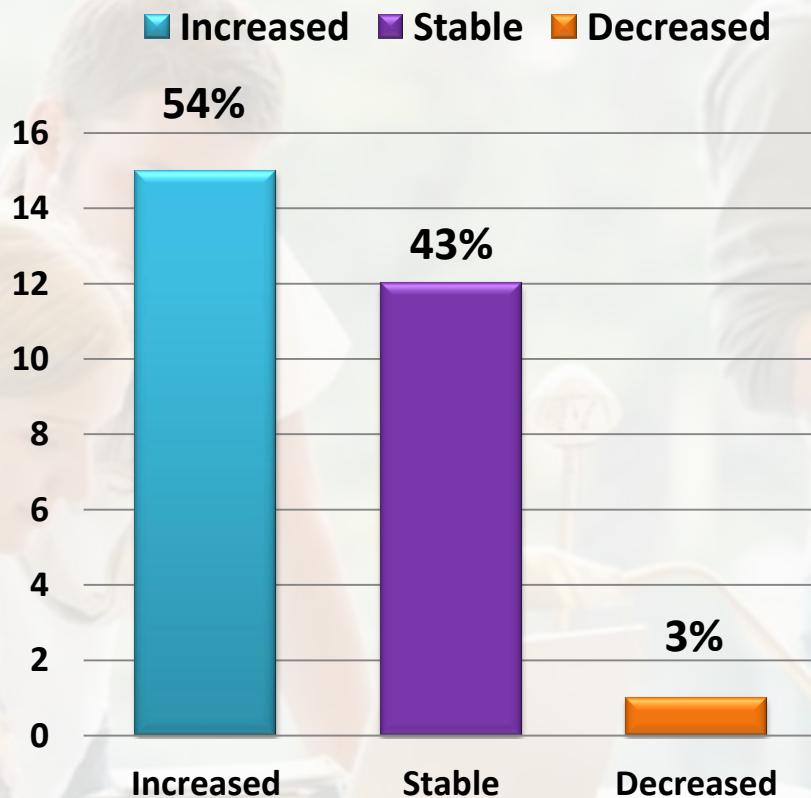
Erasmus+: first results



3900 HE student and staff mobility applications compared to 4457 ECHE holders



Demand for student and staff mobility

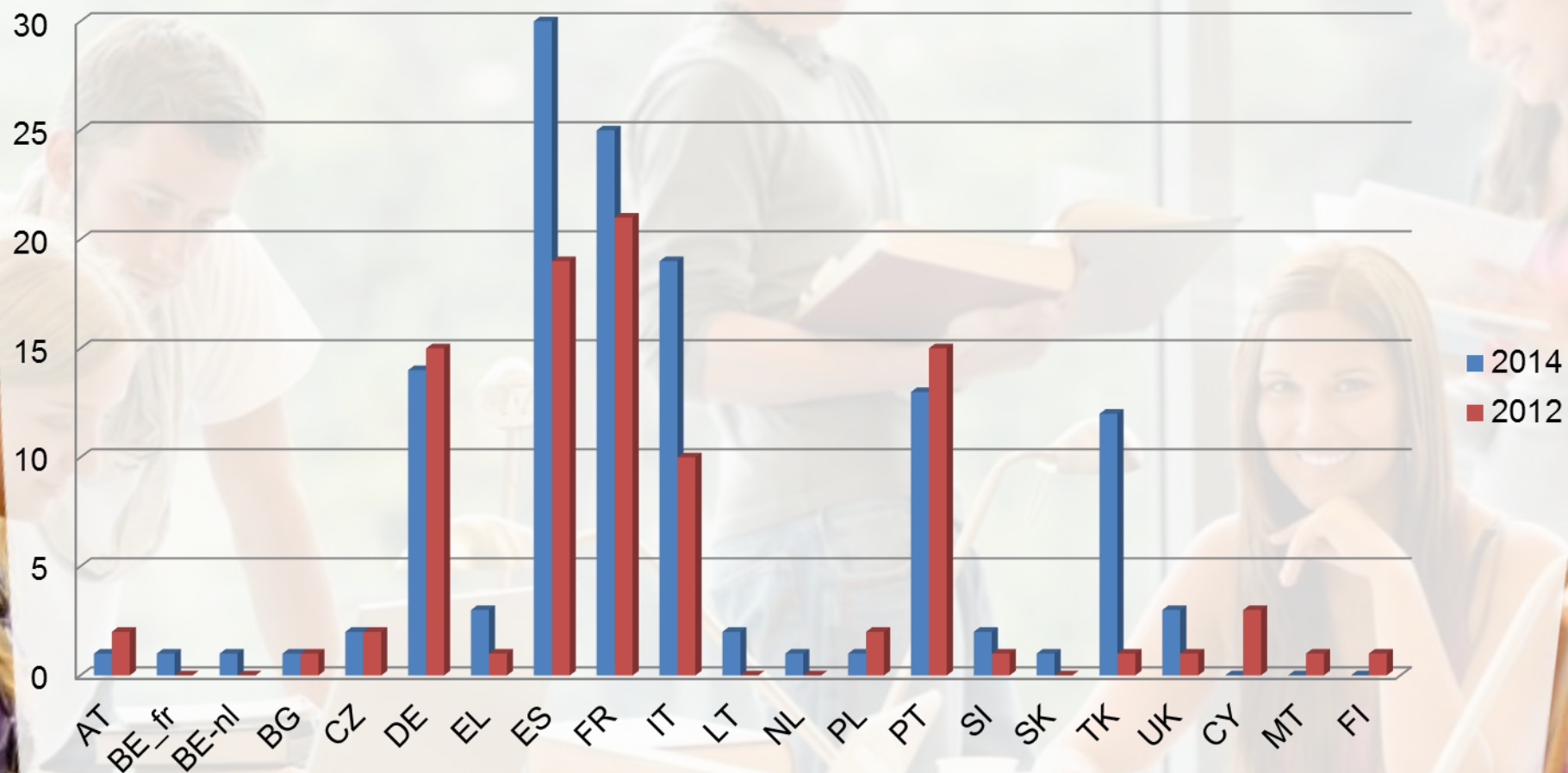


Main HEI solutions for increased demand:

- Limitation of E+ funded duration, combined with a zero grant period – **10 out of 15 NAs**
- Set specific selection criteria and priorities – **3 out of 15 NAs**
- Recruited additional HR in International Office – **3 out of 15 NAs**

Consortia

2014 vs 2012



Consortia

2014 mobility consortia selected

132

In 17 countries

Placement consortia in 2012-13

114

In 15 countries

Placement consortia in 2011-12

93

In 12 countries



Erasmus+

Online Linguistic Support (OLS)

NA Directors meeting
17-19 November 2014

erasmusplusols.eu

READY TO EXPERIENCE
SOMETHING NEW WITH
ERASMUS+ ?



What is the Online Linguistic Support?

Erasmus+ is the new EU programme for education, training, youth and sport for the period 2014-2020. Erasmus+ offers opportunities to study, train, gain work experience or volunteer abroad and one of its strategic objectives is to strengthen linguistic skills and support language learning.

For more information on Erasmus+:

The Online Linguistic Support (OLS) supports language learning for Erasmus+ mobility participants. OLS offers participants in Erasmus+ long-term mobility activities (Key Action 1) the opportunity to assess their skills in the foreign language(s) they will use to study, work or volunteer abroad. In addition, some selected participants may follow an online language course to improve their competence.

For more information on language assessments:

For more information on language courses:

The OLS is available for the following languages:

DE
German

EN
English

ES
Spanish

FR
French

IT
Italian

NL
Dutch



Assessment test

The test assessing language competence is mandatory for all participants of an Erasmus+ programme.



Join the community

This space is exclusively reserved for the participants in the Erasmus+ mobility activities.



Online language courses

Participants (after completion of the first language assessment test) will be able to take language courses.

Launched on
1/10/2014

READY TO EXPERIENCE
SOMETHING NEW WITH
ERASMUS+ ?



What is the Online Linguistic Support?

Erasmus+ is the new EU programme for education, training, youth and sport for the period 2014-2020. Erasmus+ offers opportunities to study, train, gain work experience or volunteer abroad and one of its strategic objectives is to strengthen linguistic skills and support language learning.

For more information on Erasmus+:

The Online Linguistic Support (OLS) supports language learning for Erasmus+ mobility participants. OLS offers participants in Erasmus+ long-term mobility activities (Key Action 1) the opportunity to assess their skills in the foreign language(s) they will use to study, work or volunteer abroad. In addition, some selected participants may follow an online language course to improve their competence.

For more information on language assessments:

For more information on language courses:

The OLS is available for the following languages:

DE
German

EN
English

ES
Spanish

FR
French

IT
Italian

NL
Dutch



6 languages



Join the community

This space is exclusively reserved for the participants in the Erasmus+ mobility activities.



Online language courses

Participants (after completion of the first language assessment test) will be able to take language courses.

2 services

Assessments

Language courses

READY TO EXPERIENCE
SOMETHING NEW WITH
ERASMUS+ ?



What is the Online Linguistic Support?

Erasmus+ is the new EU programme for education, training, youth and sport for the period 2014-2020. Erasmus+ offers opportunities to study, train, gain work experience or volunteer abroad and one of its strategic objectives is to strengthen linguistic skills and support language learning.

For more information on Erasmus+:

The Online Linguistic Support (OLS) supports language learning for Erasmus+ mobility participants. OLS offers participants in Erasmus+ long-term mobility activities (Key Action 1) the opportunity to assess their skills in the foreign language(s) they will use to study, work or volunteer abroad. In addition, some selected participants may follow an online language course to improve their competence.

For more information on language assessments:

For more information on language courses:

The OLS is available for the following languages:

DE
German

EN
English

ES
Spanish

FR
French

IT
Italian

NL
Dutch



Assessment test

The test assessing language competence is mandatory for all participants of an Erasmus+ programme.



Join the community

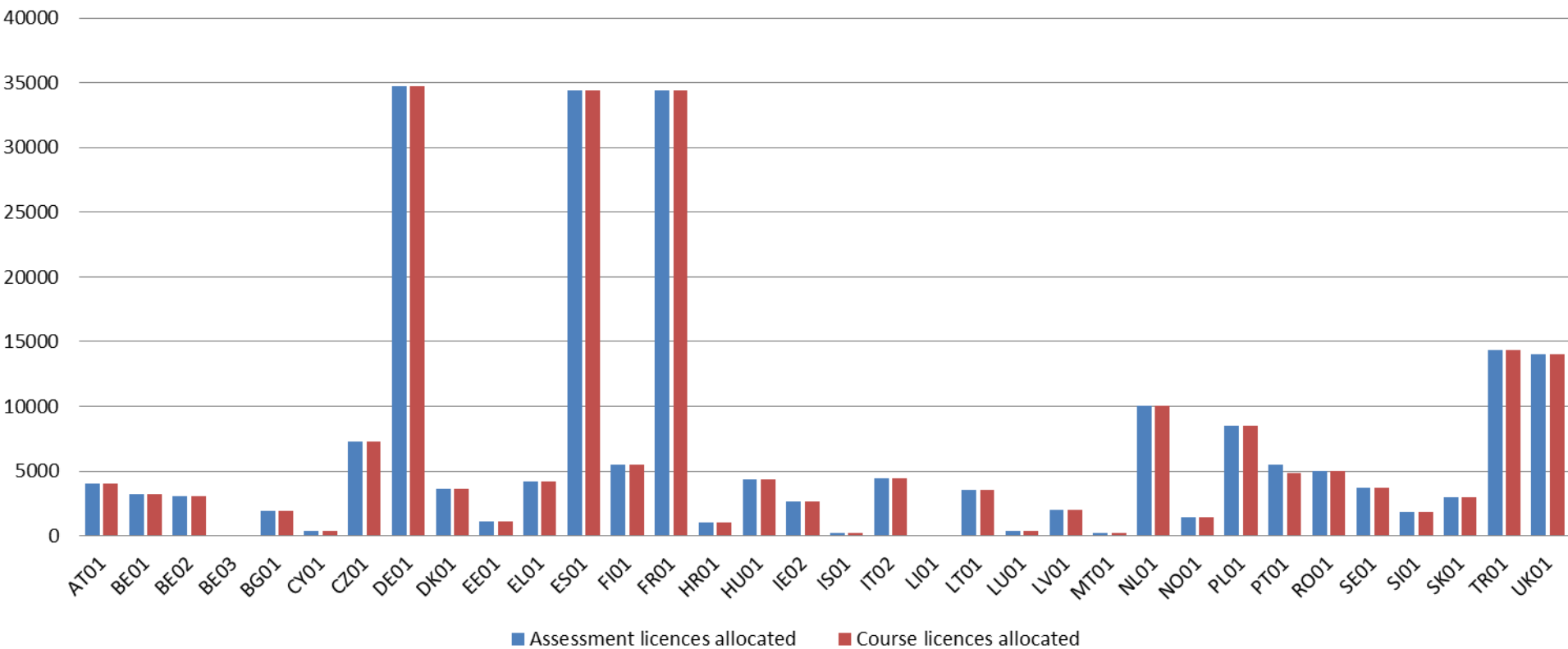
This space is exclusively reserved for the participants in the Erasmus+ mobility activities.



Online language courses

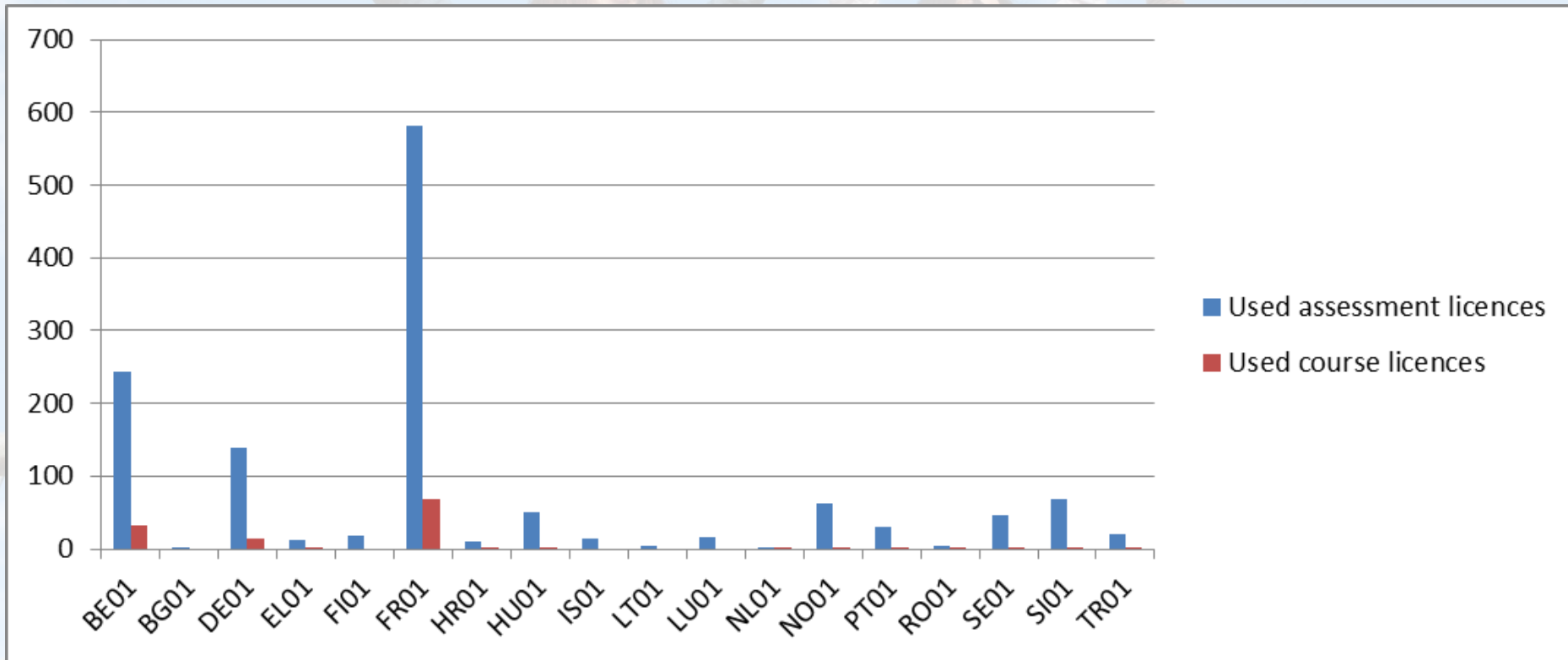
Participants (after completion of the first language assessment test) will be able to take language courses.

OLS licence allocation by NAs to beneficiaries 2014 Call (KA1 HE)



OLS Statistics – 2014 Call (KA1 HE)

Licences already used by participants



Roadmap

A background image showing five young people (three women and two men) standing on a bridge with a decorative metal railing. They are all smiling and have their arms raised in the air, suggesting a celebratory or joyful mood. The sky is bright blue with some light clouds.

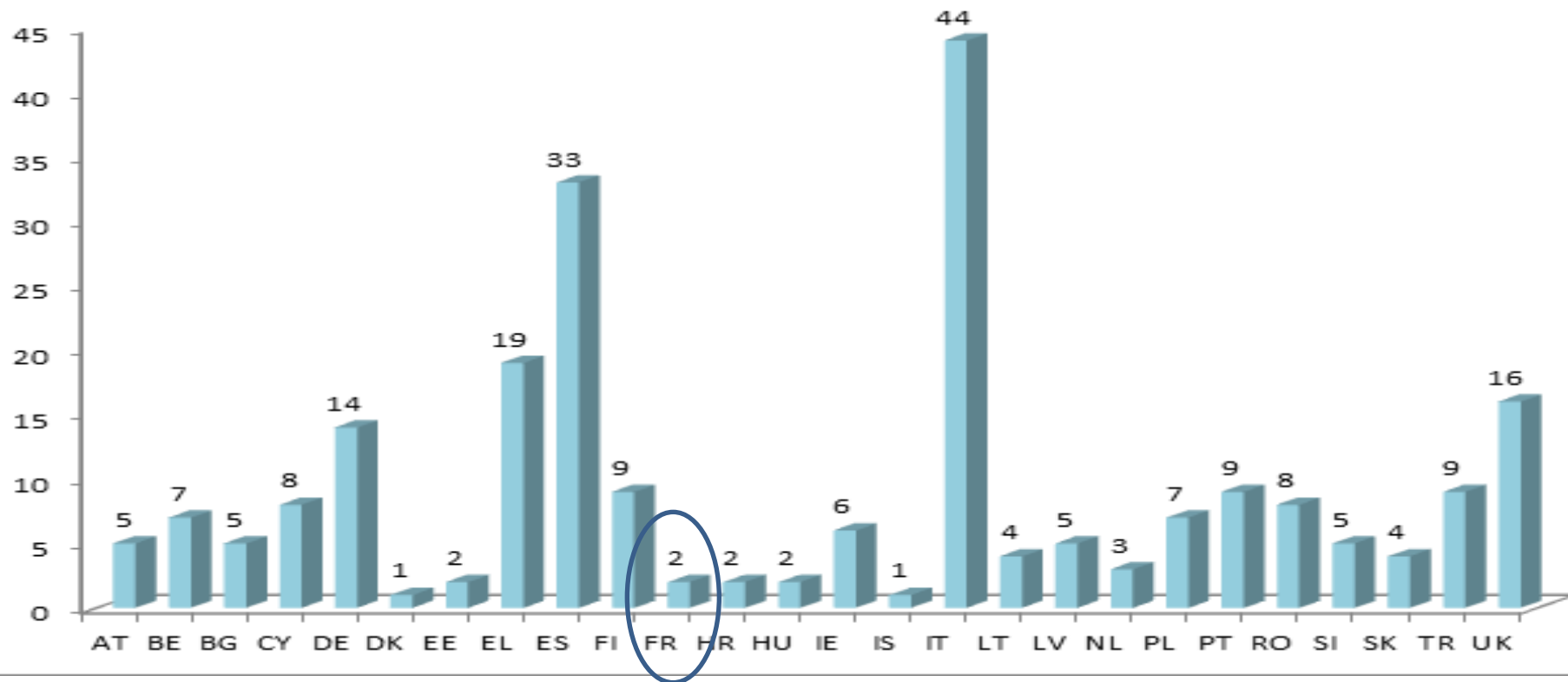
October - December 2014

- Consultation with NAs to improve OLS functionalities
 - Discussion on re-allocation
 - Improving the communication between OLS and MT+ (NA IT WG)

2015 Call

- OLS for KA1 long-term mobility:
 - HE
 - VET (min. 1 month)
 - Youth-EVS

230 submitted applications Countries of the Applicant organisations



10 Selected projects

Applicant countries						
Austria	Cyprus	France	Finland	Ireland	Italy	Lithuania
2	1	1	1	1	3	1

- **Most represented topic:** Support to the development of entrepreneurial skills
- **Partnership composition:** 3 projects involve between 7 and 9 partner organisations; 7 projects involve between 11 and 16 partner organisations. These projects involve enterprises, professional associations, from the food sector, textile sector, SMEs, etc.
- **Partner country involved:** Switzerland

- About 1400 submitted

- About **150** selected

 - **10** in France

