



Meeting of Representatives of European Affairs

Dr Monica Dietl
Director of the COST Association

French Rectors Conference, CPU, in Brussels, 26 November 2014

COST Mission Statement

COST enables **breakthrough scientific and technological developments** leading to new concepts and products.

It thereby contributes to strengthening Europe's research and innovation capacities.

Through **trans-European networking** of nationally funded research activities.



OUTLINE

- **COST Association**
- **Agreements with the EC: FPA-SGA**
- **COST Actions - how to participate?**
- **COST Policies under H2020**
- **COST Inclusiveness Target Countries**
- **COST Open Call**
- **Become a COST Expert**



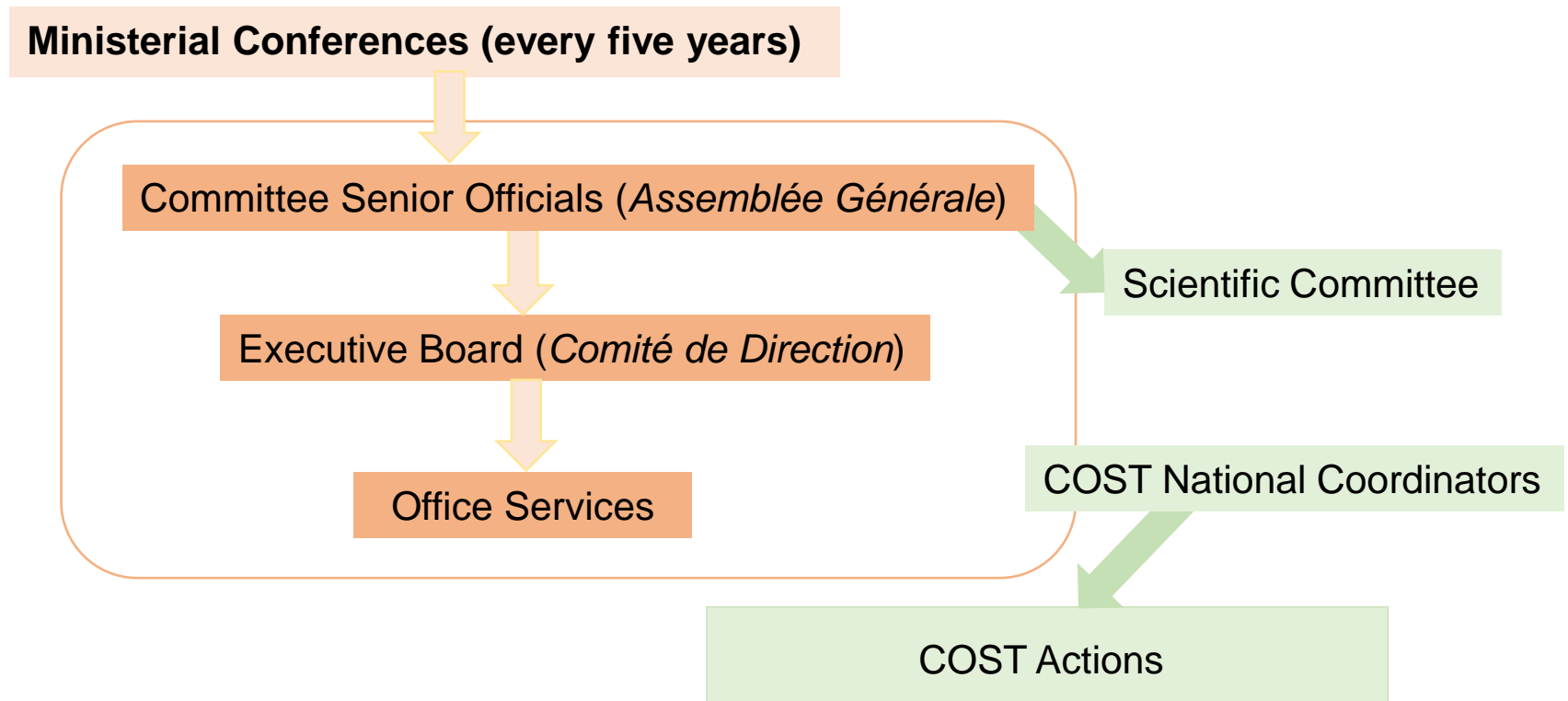
COST Association



The COST Association

- Legal form: International non-profit Association under Belgian Law (Association International sans But Lucratif - AISBL)
- Establish on 19 September 2013 by COST Member Countries, all 35 COST Member Countries have joined
- The COST Association integrates COST governance, management and implementation functions

COST Association organisation and relation with other actors





COST Agreements with EC



Agreements signed between COST Association and European Commission under Horizon 2020

Framework Partnership Agreement, FPA:

- Duration: 7 years
- Political commitment
- Strategy and Policy objectives
- Sets the Action Plan and secures long-term perspective

Specific Grant Agreement, SGA:

- Duration: 1 year
- Financial commitment
- Implementation objectives
- Describes the work to be done and concrete tasks

COST at a turning point:

A unique framework for pan-European S&T cooperation as clear demonstration of European values

COST Budget and Objectives

EUR 300 million budget (constant prices) for 7 years drawn from two Horizon 2020 work programmes:

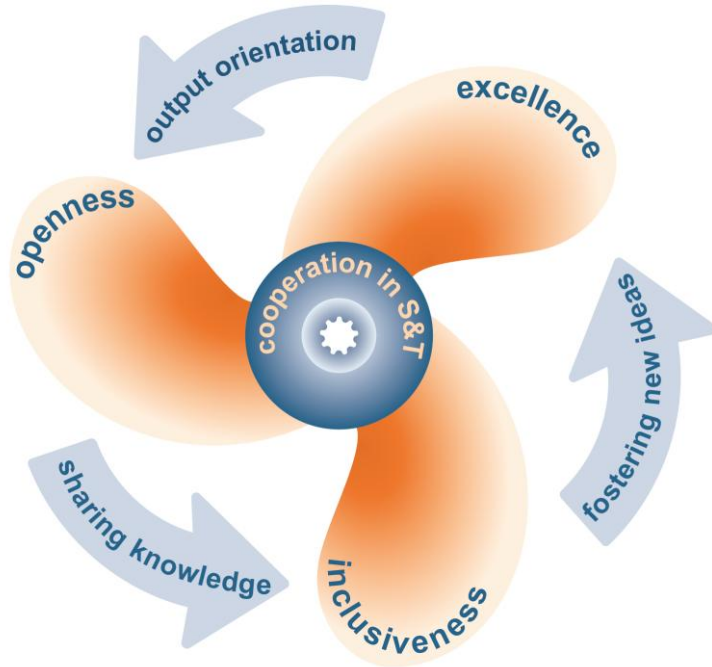
- Challenge 6 “Europe in a changing world – inclusive, innovative and reflective Societies”
- “Spreading Excellence and Widening Participation”

Four specific Objectives to fulfil COST mission:

- Joining research efforts and developing common S&T programmes
- Building capacity
- Addressing societal questions
- Strengthening COST’s Inclusiveness Policy



Towards these Objectives



COST Key Principles

- Supporting excellence
- Being open
- Being inclusive

COST Driving Forces

- Fostering new ideas
- Sharing knowledge
- Output orientation



Towards these Objectives

Strengthen specific strategies:

- Inclusiveness Policy
 - Geographical, age, gender
- Impact orientation
 - Impact assessment
- Strategic Initiatives
 - Targeted Networks
- Communication Strategy
 - Outreach and Conferences
- Industrial dimension
 - SMEs
- International Cooperation
 - NNC

11

http://www.cost.eu/about_cost/strategy



COST ACTIONS



COST Actions are Networks

Pan-European, bottom-up science and technology networks open to researchers, industry and policy stakeholders

Duration up to **4 years**

Minimum of **5 COST Member Countries***

For average of 19 COST Member Countries* -
average annual budget of **EUR 129 000**

Through different **networking tools:**

Meetings (MC, WG), Short-term Scientific Missions,
Training schools, Publications & dissemination
activities



COST Actions are Open

- **All fields of S&T** (including interdisciplinary, new and emergent fields)
- **Any novel and original idea** (innovative)
- **All partners** (public and private, big and small)
- **All career stages** (young and senior investigators)
- **All countries** (including COST Near Neighbour Countries (NNC) and International Partner Countries (IPC))

COST Actions – 2014

330	running COST Actions
30 000	Participants
2370	STSMs
> 1300	Scientific workshops and meetings
> 220	Training schools
> 5000	Training school participants



Do you want to participate?

<http://www.cost.eu/participate>



Who can participate?

Researchers, engineers and scholars from:

- **COST Member Countries** and Cooperating State
- Near Neighbour Countries
- International Partner Countries
- European Commission and EU Agencies
- European RTD Organisations
- International Organisations

See Set of COST Implementation Rules



**Would you like to join an existing
COST Action?**

http://www.cost.eu/participate/join_action



COST Actions are Open!

You can join any Action that is running:

- **Aa a MC Member:**

By contacting your CNC in order to be one (of the maximum two) MC members representing your Country

- **Aa a WG Participant:**

By contacting you respective MC member and or the Action Chair and participate in the Working Groups

How to find a running Action?

The screenshot displays the 'All Actions' page on the COST website. On the left is a vertical navigation menu with categories such as 'All Actions', 'Biomedicine and Molecular Biosciences (BMBS)', 'Chemistry and Molecular Sciences and Technologies (CMST)', 'Earth System Science and Environmental Management (ESSEM)', 'Food and Agriculture (FA)', 'Forests, their Products and Services (FPS)', 'Individuals, Societies, Cultures and Health (ISCH)', 'Information and Communication Technologies (ICT)', 'Materials, Physics and Nanosciences (MPNS)', 'Transport and Urban Development (TUD)', and 'Trans-Domain Proposals'. The main content area is titled 'All Actions' and includes a descriptive paragraph. Below this is a search box titled 'Search for COST Action' with fields for 'Full text search', 'Action number', 'Start date from', and 'End date until'. A 'Submit' button is present for each field. The search results are displayed as a list of actions, each with a domain icon, action number, title, and dates. The first few actions listed are: IS1309 | Innovations in Climate Governance: Sources, Patterns and Effects (INOGOV) | 05 June 2014 - 04 June 2018; CM1306 | Understanding Movement and Mechanism in Molecular Machines | 03 June 2014 - 02 June 2018; FA1306 | The quest for tolerant varieties: Phenotyping at plant and cellular level | 22 May 2014 - 21 May 2018; BM1308 | Sharing Advances on Large Animal Models (SALAAM) | 19 May 2014 - 18 May 2018; TD1305 | Improved Protection of Medical Devices Against Infection (IPROMEDAI) | 19 May 2014 - 18 May 2018; TD1309 | Play for Children with Disabilities (LUDI) | 19 May 2014 - 18 May 2018; and TD1308 | Origins and evolution of life on Earth and in the Universe (ORIGINS) | 15 May 2014 - 14 May 2018.

All Actions

This section gives an overview of all past and running Actions with descriptions provided by the Actions directly. Click on the Action of your interest. Alternatively, use the detailed search option in the top right corner of your screen or visit the Domain pages below.

Search for COST Action

Full text search

search in title only

all Domains

Submit

Action number Submit

Start date from End date until Submit

DD/MM/YYYY DD/MM/YYYY

e.g. 28/04/2010

Page 1 | 2 | 3 | 4 | 5 | 6 | 7 | 8 | 9 | 10 | 11 |

Action 1 to 30 of 1092

Sort by

- IS1309 | Innovations in Climate Governance: Sources, Patterns and Effects (INOGOV) | 05 June 2014 - 04 June 2018
- CM1306 | Understanding Movement and Mechanism in Molecular Machines | 03 June 2014 - 02 June 2018
- FA1306 | The quest for tolerant varieties: Phenotyping at plant and cellular level | 22 May 2014 - 21 May 2018
- BM1308 | Sharing Advances on Large Animal Models (SALAAM) | 19 May 2014 - 18 May 2018
- TD1305 | Improved Protection of Medical Devices Against Infection (IPROMEDAI) | 19 May 2014 - 18 May 2018
- TD1309 | Play for Children with Disabilities (LUDI) | 19 May 2014 - 18 May 2018
- TD1308 | Origins and evolution of life on Earth and in the Universe (ORIGINS) | 15 May 2014 - 14 May 2018

http://www.cost.eu/domains_actions/all_actions

How to find a running Action?

MPNS COST Action MP1210

The String Theory Universe

Descriptions are provided by the Actions directly via e-COST.

Although String Theory has been around for more than forty years, it has never been so important for physical reality as it is now, due to its novel outstanding applications to different areas of Physics and Mathematics.

While the Large Hadron Collider (LHC) narrows down the experimental limits on supersymmetric particles and satellite missions such as WMAP and PLANCK probe the very early Universe, this Action aims at creating a strong European Network focused on fundamental, forefront research exploring the role played by String Theory in Particle Physics, Cosmology and Condensed Matter Physics.

The large majority of European world experts in String Theory will be involved in this Action. This will ensure a top quality research output, achieved through an intense exchange of expertise, intra-European collaboration and co-organization of scientific activities.

The Action will ensure fair gender representation and simultaneously adopt specific measures for promoting the involvement of women scientists at all levels. Moreover, it will foster the active participation of junior excellent scientists.

The outcome of the Action is expected to have a positive impact on both science and society at a European level, in line with the strategic priorities of COST.

Materials, Physical and Nanosciences COST Action MP1210

- ▶ Description
- ▶ Parties
- ▶ Management Committee



General Information*

Chair of the Action:
[Prof Silvia PENATI](#) (IT)

Vice Chair of the Action:
[Prof Yolanda LOZANO](#) (ES)

DC Rapporteurs:
[Prof Laurens KATGERMAN](#) (NL)

Science officer of the Action:
[Dr Fatima BOUCHAMA](#)

Administrative officer of the Action:
[Ms Milena STOYANOVA](#)

Downloads*

Action Fact Sheet
[Download AFS as RTE](#)

Memorandum of Understanding
[Download MoU as PDF](#)

Description of the Action Objectives, Working Groups, etc...



**Would like to submit a COST Action
proposal?**

http://www.cost.eu/participate/open_call

Make your own COST proposal

What do you need?

- An idea on any Science and Technology topic that needs networking support
- At least 5 colleagues from 5 different COST Member Countries (or Cooperating State)





New Action Proposal Evaluation and Selection Procedure

The new COST scientific organisation:

- **One-stage submission**
 - Proposal up to 15 pages
- **Three-step procedure**
 - Evaluation (External Experts)
 - Revision (Review Panels)
 - Selection (Scientific Committee)



Action Proposal Evaluation

- Driven by **renowned international external experts (peer review)**
- Based on excellence, impact and implementation criteria
- Each proposal **anonymously** and **remotely** evaluated by three independent External Experts in the science and technology field(s) indicated by the proposers
- **Consensus-oriented**, using on-line collaborative tools



Action Proposal Revision

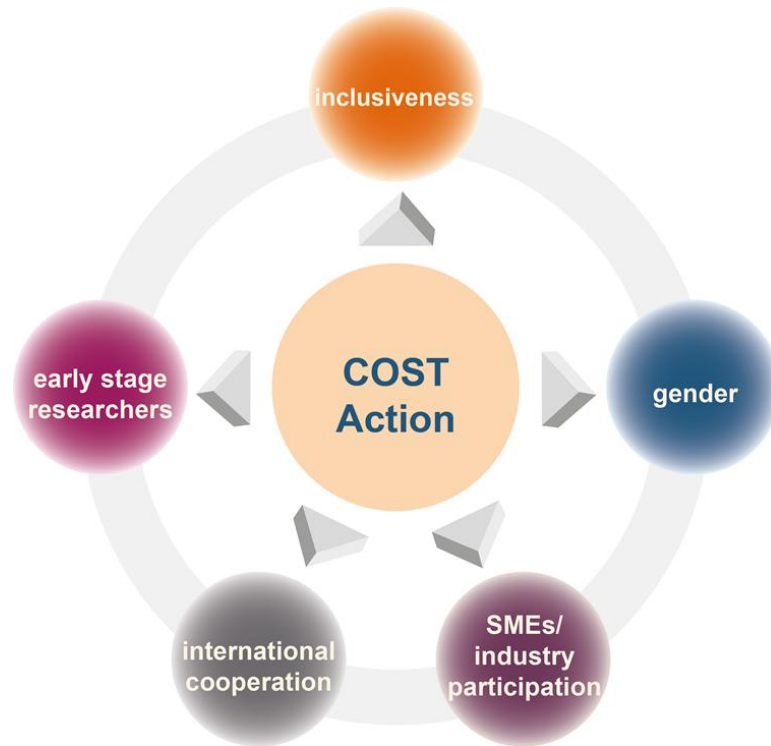
- Driven by ad hoc **Review Panels** created according to the actual needs of the proposals submitted to each Collection Date
- Review Panels composed of **active scientists** nominated by the COST National Coordinators to a pool of experts
- Review Panels **reporting to** the Scientific Committee, quality checks and resolution of eventual discrepancies



Action Proposal Selection

- The **Scientific Committee**, appointed by and reporting to the CSO
- **High-level experts**, one per COST Member Country*
- The **Scientific Committee** selects the top-ranked proposals to be recommended for approval by the CSO

COST Policies



- **Inclusiveness**
- **Early stage researchers (ESRs)**
- **Gender balance**
- **International cooperation**
- **SMEs/industry participation**



Excellence and Inclusiveness

- Encouraging and enabling **excellent researchers** from less research-intensive countries across Europe to set up, lead or join COST Actions
- **Counterbalancing** research communities' unequal access to knowledge infrastructures, funding and resources distribution
- Contributing to the realization of Horizon 2020 Widening Pillar objectives through **COST Inclusiveness Policy**

COST Inclusiveness Target Countries

COST Member Countries	
EU Member States	Associated Countries to Horizon 2020
Bulgaria, Cyprus, Czech Republic, Estonia, Croatia, Hungary, Lithuania, Latvia, Luxemburg, Malta, Poland, Portugal, Romania, Slovenia, Slovakia	the former Yugoslav republic of Macedonia, Republic of Serbia, Turkey Bosnia-Herzegovina

Early Stage Researchers

PhD* ≤ 8 years

- Address the difficulty in developing independent careers and to establish their first research group under their own responsibility



**COST Inclusiveness
Policy
supports ESRs**

*PhD or equivalent experience

Gender Balance

male/female

- Encourage and enable under represented gender to be intensively involved in all COST activities
- Networking the way to gender equality in science and technology



**COST Inclusiveness
Policy supports
Gender balance**



Specific inclusiveness-oriented activities

- Raising awareness at various events
- Seeking inclusiveness target countries' full involvement by organising:
 - COST Info Days
 - Strategic events
 - Conferences
 - Workshops
- Seeking researchers' full involvement by taking up:
 - Partner roles in preparing proposals for COST Actions
 - Leadership roles in COST Actions
 - Initiator roles in scientific committees
 - Grant Holder role



COST Open Call

- The new Open Call will be published on the COST website end **November 2014**
- Proposals can be submitted as of end **January 2015**
- Collection Date end **March 2015**
- Stay tuned for COST updates:
www.cost.eu/opencall



Become a COST Expert

<http://www.cost.eu/participate/experts>

Become a COST Expert!

As a COST Expert, you will have the opportunity to:

- Contribute to the evaluation of COST Open Call proposals
- Participate in the assessment of Action results and outcomes
- Be invited to take part in the assessment of COST strategic activities

New experts can express their interest via the COST Expert online registration form:

www.cost.eu/experts

An updated Curriculum Vitae with a list of publications is required to demonstrate competence in specific areas of expertise.

More on COST Experts:

www.cost.eu/participate/experts





COST

Thank you for your attention!

monica.dietl@cost.eu

COST Association
Avenue Louise 149
1050 Brussels, Belgium
T: +32 (0)2 533 3810
F: +32 (0)2 533 3890

office@cost.eu

www.cost.eu

Get COST News by e-mail
by signing up at

www.cost.eu/notification



www.facebook.com/COST.Programme



twitter.com/COSTprogramme



www.linkedin.com/groups?gid=1699127



EUROPEAN COOPERATION IN SCIENCE AND TECHNOLOGY